

**Monolayer and bilayer pentacene on Cu(111)**J. A. Smerdon,<sup>1</sup> M. Bode,<sup>2</sup> N. P. Guisinger,<sup>1</sup> and J. R. Guest<sup>1,\*</sup><sup>1</sup>Center for Nanoscale Materials, Argonne National Laboratory, Argonne, Illinois 60439, USA<sup>2</sup>Physikalisches Institut, Experimentelle Physik II, Universität Würzburg, Am Hubland, D-97074 Würzburg, Germany

(Received 21 July 2011; revised manuscript received 27 September 2011; published 21 October 2011; corrected 29 November 2011)

The morphology and electronic structure of pentacene (Pn) deposited on Cu(111) was studied using scanning tunneling microscopy (STM) and spectroscopy (STS). Deposition of a multilayer followed by annealing to reduce coverage to a monolayer results in the formation of either of two unique phases: a two-dimensional herringbone structure previously unobserved for any linear acene to our knowledge, or a “random-tiling” structure. Coverage greater than a monolayer promotes the formation of a bilayer phase similar to that observed for Pn/Ag(111). STS shows that the electronic structure of the first layer is strongly modified due to its proximity to the substrate, while the second layer exhibits nearly bulklike electronic structure.

DOI: [10.1103/PhysRevB.84.165436](https://doi.org/10.1103/PhysRevB.84.165436)

PACS number(s): 68.37.Ef, 81.05.Fb, 68.55.–a, 71.20.Rv

**I. INTRODUCTION**

The interest in molecular analogs to semiconductor electronics stems from several factors, such as the ever-looming limit to the ultimate feature size achievable using conventional lithography and the appeal of bottom-up fabrication techniques. Of increasing interest in the current energy landscape are organic photovoltaics (OPVs).<sup>1</sup> Although these are not yet as efficient as contemporary silicon-based PVs, they have several desirable properties such as flexibility, low cost, and greatly increased optical absorption.

The ultimate performance of a molecular device depends among other factors on the nature of the interfaces between materials, including the contacts between the active molecules and the substrate.<sup>2</sup> The desire to understand and improve these contacts is a major part of the impetus behind forming and studying molecular layers on surfaces. Additionally, the action of such devices as single-molecule rectifiers<sup>3</sup> and molecular heterojunctions based on discrete donor and acceptor molecules depends strongly on the relative alignment of energy levels in the molecules, which may be strongly modified by the interaction of substrate electrons with molecular orbitals.<sup>4</sup>

Pentacene (Pn) (C<sub>22</sub>H<sub>14</sub>), depicted in Fig 1, is an archetypal *p*-type molecule for organic electronics, with good carrier mobility without doping.<sup>5</sup> It is a linear polyacene comprising five benzene rings fused along C-C bonds. In the bulk it adopts a herringbone structure.<sup>6</sup> While deposition on inert surfaces such as SiO<sub>2</sub> or Bi/Si(111)-7 × 7 leads to a similar but not identical structure with the molecular axes nearly perpendicular to the substrate surface,<sup>7,8</sup> deposition on metallic surfaces such as Au, Cu, or Ag results in adsorption with the molecular plane parallel to the surface. On Au (Refs. 9–13) and Ag (Refs. 14–16), the molecule appears flat; however, on Cu surfaces the molecule acquires a bending that is clear in scanning tunneling microscopy<sup>17–22</sup> and atomic force microscopy<sup>23</sup> (AFM) measurements and has been quantified using density functional theory (DFT) for adsorption on Cu(110).<sup>17</sup> The bending on Cu(110) is approximately 0.04 nm measured between the center of the molecule and a plane bisecting the H atoms at either end and is shown in Fig. 1(c). Adsorption on Cu(111) has also been studied using DFT, although during relaxation the C atoms were constrained to be parallel to the surface, so molecular bending could not be

reproduced.<sup>24</sup> We know of no reports on nanoscale studies of the adsorption of Pn on a Cu(111) surface to monolayer coverage and beyond.

This is a report of the morphology and electronic structure of Pn on Cu(111) obtained through scanning tunneling microscopy/spectroscopy (STM/STS) measurements.

**II. EXPERIMENTAL**

All measurements were carried out in a commercial Omicron ultrahigh-vacuum (UHV) variable-temperature (VT)-AFM/STM operating with the sample maintained at 55 K. The Cu(111) crystal was cleaned by simultaneously sputtering with Ar<sup>+</sup> ions at 1 keV and annealing to 900 K, with a final sputtering cycle at room temperature followed by annealing to 900 K. Tungsten tips were prepared via electrochemical etching with 2M NaOH solution and were cleaned with running water for 5 min and examined in an optical microscope before introduction to the UHV system.

Pentacene was evaporated from a Dodecon four-cell organic molecular-beam epitaxy source at 510 K, producing a multilayer that was then reduced to around a monolayer by postdeposition annealing as described below. Each film described was prepared from the same starting point with a freshly cleaned Cu(111) surface. All gap voltages are quoted as the sample bias. Spectroscopy *dI/dV* results are collected with the standard lock-in technique ( $f = 20$  kHz,  $V_{\text{mod}} = 30$  mV).

During scanning, there was a tendency to collect molecules at the end of the tip, as evidenced by the appearance of multiple tips. When this occurred, the tip was *e*-beam heated with 2 W for 10 s, which usually restored the imaging properties.

**III. RESULTS AND DISCUSSION****A. Scanning tunneling microscopy**

When Pn is deposited on the Cu(111) surface at low coverage, it has been demonstrated that it adopts a symmetrical adsorption site with the molecular axis lying along a close-packed [1 $\bar{1}$ 0] direction and with the molecule center above an hcp hollow site with a *b*-plane atom beneath.<sup>19</sup> We know of no reports of monolayer coverages of Pn on Cu(111), although on Cu(110) Pn forms rows of Pn molecules with long axes parallel

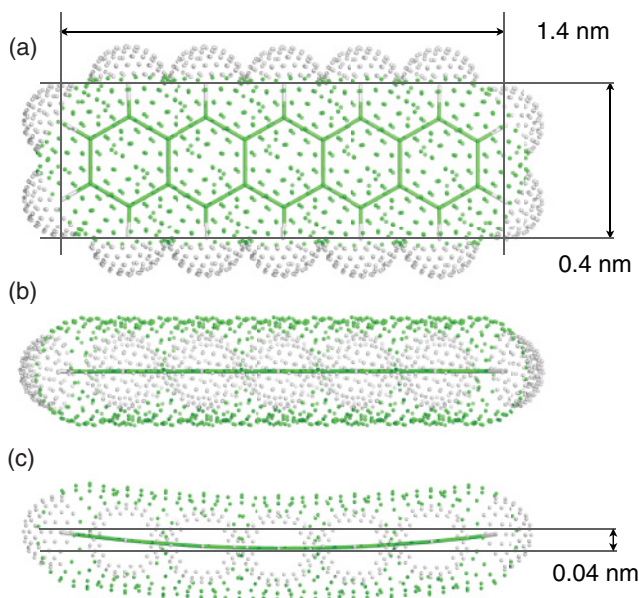


FIG. 1. (Color online) (a)(b) Pentacene; (c) pentacene with a 0.04 nm curvature added as observed by Müller *et al.* (Ref. 17).

and molecular plane parallel to the surface.<sup>20,22</sup> On Cu(119), Pn forms long chains using the substrate steps as a template.<sup>18,25</sup> There are some reports of a freely moving Pn “gas” at room temperature on Ag(111),<sup>14</sup> and on a Pn monolayer adsorbed on Ag-Si(111)- $(\sqrt{3} \times \sqrt{3})R30^\circ$ .<sup>26</sup> Thermal motion in our experiments is expected to be suppressed because they were performed with a substrate temperature of 55 K.

### 1. Pn/Cu(111) random tiling (R) phase

Following a postdeposition anneal to 420 K for 10 min, a structure emerges that we describe as a “random tiling” of Pn molecules [shown in Fig. 2(a)]. The bright ends of the Pn molecules are indicative of the aforementioned bending [indicated in Fig. 1(c)]. Pentacene molecules are evenly distributed along the three main axes of the underlying Cu substrate, and knowledge of the adsorption site for a single molecule

as determined using STM by Lagoute *et al.*<sup>19</sup> permits the identification of some of the relative positions of the molecules. A structure model based on this adsorption preference is depicted in Fig 2(b) and shows reasonable agreement with the image. The structure complexity and lack of simultaneous substrate resolution make the exact determination of some nucleation sites intractable; nevertheless, a reasonable fit may be obtained, and various portions of the structure each yield a film density of  $0.034 \pm 0.002$  Pn molecules per surface Cu atom.

Certain molecules in Fig. 2(a) appear *longer* than others. These are invariably located in larger pores in the film. The interpretation of this observation is that molecules located in such pores have some freedom of movement. The elongation of one end of each such molecule, often with a dark feature as well as an additional light feature, rather than an overall loss of resolution over each such site, indicates that the movement of such molecules is activated by the tip. Tip-induced motion along the long axis of the molecule has been observed by Lagoute *et al.*<sup>19</sup> The ease of motion along the long axis of the molecule compared to other directions is due to the incommensuration between the periodicity of the acene rings and the Cu nearest neighbor (NN), leading to a potential energy surface with reduced corrugation.

A statistical comparison of apparent molecule “lengths” is shown in Fig. 2(c). The previous measurement of peak-to-peak Pn length on Cu(111) of  $0.98 \pm 0.02$  nm was performed using a low-temperature STM at 7 K and is directly calibrated from concurrent atomic resolution Cu(111) images.<sup>19</sup> Our variable-temperature STM yields a measurement of  $1.07 \pm 0.06$  nm, which is not inconsistent with the previous measurement. However, we cannot directly observe the Cu(111) surface corrugation. We thus calibrate our measurement by setting the average length of a (motionless) Pn molecule to the Lagoute *et al.* value. The quantity measured in Fig. 2(c) is the *peak separation* of line profiles taken along molecular long axes for molecules in all orientations. An elongated molecule often has more than one apparent “end,” giving rise to more than two peaks in the line profile; these molecules contribute a measurement for each measurable origin-peak distance. Also, longer-appearing molecules were preferentially sampled. Therefore, the

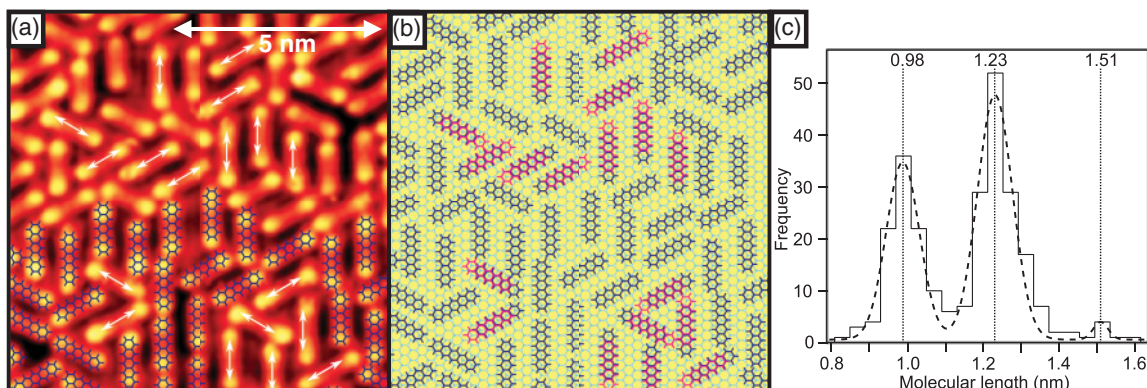


FIG. 2. (Color online) (a)  $10 \times 10$  nm<sup>2</sup> STM topograph ( $V_{\text{gap}} = 0.5$  V,  $I_T = 1$  nA) of Pn/Cu(111), showing the random-tiling structure with a section of the model proposed in (b) superimposed, and with mobile molecules indicated with arrows showing the direction of motion; (b) a model for a section of the Pn random-tiling structure, based on the adsorption site for a single molecule (Ref. 19); (c) histogram showing the distribution of apparent lengths of Pn molecules.

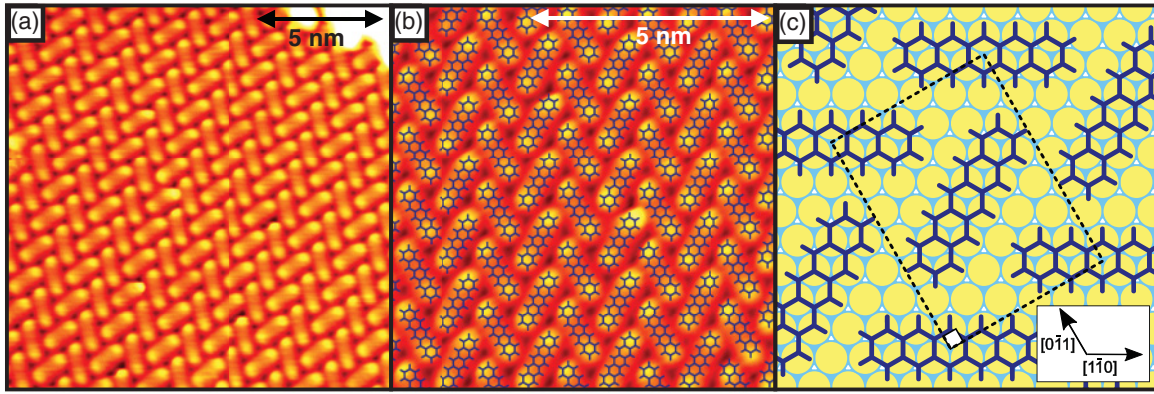


FIG. 3. (Color online) (a)  $15 \times 15 \text{ nm}^2$  STM topograph ( $V_{\text{gap}} = 0.5 \text{ V}$ ,  $I_T = 0.6 \text{ nA}$ ) of Pn/Cu(111), showing the monolayer herringbone structure; (b) a portion of the image in (a) adjusted for drift with the model in (c) superimposed; (c) the proposed Cu(111)-(6 3, 0 7)-2Pn model for herringbone Pn, with Cu substrate vectors for the matrix notation indicated.

important feature of the histogram is not the relative population of peaks but the quantization of molecular lengths. The peaks in the histogram are separated by an average of  $0.26 \pm 0.05 \text{ nm}$ , which is equal within error to the nearest-neighbor distance in the closely packed rows on the copper surface,  $0.2556 \text{ nm}$ ; thus a similar result to that of the earlier molecular manipulation study<sup>19</sup> of Pn on Cu(111) is obtained.

The data under discussion were collected with a range of tunneling parameters. The data presented in Fig. 2 were collected at a bias of  $0.5 \text{ V}$  and tunneling current of  $1 \text{ nA}$ , which corresponds to a gap impedance of  $0.5 \text{ G}\Omega$ . Similar molecular motion is present in data collected with gap impedances of  $4 \text{ G}\Omega$  ( $2 \text{ V}$ ,  $500 \text{ pA}$ ) and  $6 \text{ G}\Omega$  ( $-3 \text{ V}$ ,  $500 \text{ pA}$ ). These observations contrast with the much lower gap impedance and therefore larger activation energy required for Pn motion in the Lagoute *et al.* study, in which measurements were conducted with constant tip height on isolated molecules. In that case, molecular motion starts at a tunneling gap impedance of approximately  $0.6 \text{ M}\Omega$  ( $0.3 \text{ V}$ ,  $500 \text{ nA}$ ),<sup>19</sup> indicating that the tip is much closer to the surface. It seems, therefore, that the molecular motion depends to a large degree on the local environment of the molecule (i.e., its proximity and orientation relative to its neighbors). An individual molecule on a surface

experiences only the attraction to the substrate and therefore resides in a deeper potential well; the intermolecular forces experienced by a molecule in a network such as the one investigated here serve to mitigate this.

## 2. Pn/Cu(111) two-dimensional herringbone (H) phase

The annealing of a freshly deposited Pn film to  $400 \text{ K}$  for  $10 \text{ min}$  produces a well-ordered monolayer consisting of three rotational domains of large areas of “two-dimensional (2D) herringbone” structured material, shown in Fig. 3(a). Again, knowledge of the adsorption site for a single molecule<sup>19</sup> permits the identification of a unique model for the domain structure which reproduces all of the features observed in STM topographs, as shown in Figs. 3(b) and 3(c). The matrix notation for the structure observed is Cu(111)-(6 3, 0 7)-2Pn, and the unit cell parameters are  $a = 3\sqrt{3} \times 0.2556 = 1.328 \text{ nm}$  and  $b = 7 \times 0.2556 = 1.789 \text{ nm}$ . The density of this structure is  $\frac{1}{21} = 0.048 \text{ Pn molecules per surface Cu atom}$ . This density is approximately  $\frac{4}{3}$  that of the *R* phase. Structural parameters are summarized in Table I. As far as the authors are aware, no similar structure has been observed for Pn or other linear acene on any surface.

TABLE I. Some properties of the structures observed. Measurements were made on STM topographs with as little as possible drift and are averages over multiple lattice parameters in all observed domain directions. Once the average was obtained it was calibrated with an average measurement of single Pn molecules from the same image against the earlier calibration for a single molecule (Ref. 19).

System	Matrix notation	Lattice parameter (nm)		Density (Pn/Cu)	Electronic states (eV)		Reference
		Expected	Measured		HOMO	LUMO	
<i>H</i> phase	Cu(111)-(6 3, 0 7)-2Pn	$a = 1.328$ $b = 1.789$	$a = 1.30 \pm 0.02$ $b = 1.80 \pm 0.02$	1/21			This work
<i>T</i> phase	Cu(111)-(3 3, 0 6)-2Pn	$a = 0.767$ $b = 1.536$	$a = 0.78 \pm 0.02$ $b = 1.51 \pm 0.02$	1/18	Layer 1: Layer 2:	-2 1.6	This work
<i>R</i> phase				1/30	Layer 1: Layer 2:	-2 1.6	This work
Ag(111)-Pn							29
Au(111)-Pn						-0.9 1.3	13
Cu(111)-NaCl-Pn						-2.4 1.7	30



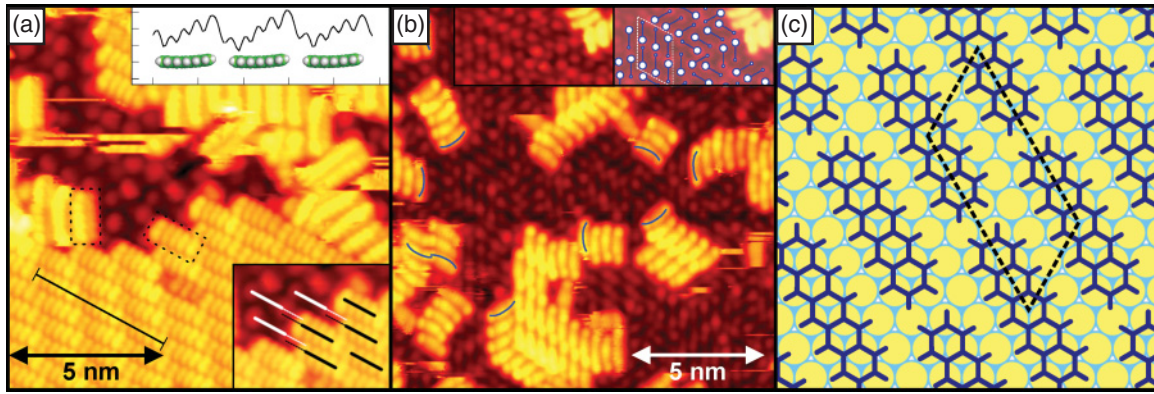


FIG. 4. (Color online) (a)  $12 \text{ nm} \times 12 \text{ nm}$  STM topograph ( $V_{\text{gap}} = -2.5 \text{ V}$ ,  $I_T = 0.2 \text{ nA}$ ) of Pn/Cu(111), showing both bilayer and monolayer Pn, with the molecules reproduced in Fig. 7 indicated with dotted boxes. Upper inset: a profile of the line indicated on the bilayer,  $x$ -scale tick separation is  $1 \text{ nm}$ ,  $y$ -scale tick separation is  $0.02 \text{ nm}$ . Lower inset: the central portion of the topograph with lines added to highlight the offset between layers. (b)  $15 \times 15 \text{ nm}^2$  STM topograph ( $V_{\text{gap}} = 2 \text{ V}$ ,  $I_T = 0.6 \text{ nA}$ ) of Pn/Cu(111), showing bilayer structures of molecules tilted about their molecular long axes, with orientation of crescent-shaped Pn indicated and some monolayer Pn. Inset: a section of a topograph at the same scale. The asymmetric blue dumbbells highlight the tilting of some monolayer molecules about their short axes, and a white parallelogram encloses a six-molecule domain of the high-density monolayer structure given in (c). The left portion of the inset reproduces the data without overlays for comparison. (c) The proposed Cu(111)-(3 3, 0 6)-Pn model for the first layer of bilayer Pn—the  $T$  phase.

### 3. Pn bilayer

For a film which is only briefly heated to  $400 \text{ K}$  (as opposed to the  $10 \text{ min}$  anneal time required for the herringbone structure), a monolayer packing with higher density than that of the herringbone structure is also observed. In our data, presented in Figs. 4(a) and 4(b), this structure is only observed in very small domains of at most 20 molecules. An interesting feature of this monolayer is the development of disorder based on the tilt of the molecules about their short axes. It is apparent from the STM topograph that the molecular long axes are not uniformly parallel to the substrate (unlike the case for the herringbone structure), with some molecules having one end further from the substrate than the opposite end. Moreover, “chainlike” behavior occurs, with the higher end of one molecule leading to the lower end of the next molecule. These phenomena are indicated with the blue dumbbells in the inset to Fig. 4(b).

Although monolayer domains seem to be limited to small numbers of molecules, *bilayer* domains may grow to a large lateral extent. The formation of the bilayer apparently stabilizes the monolayer in this structure; if underlying Pn molecules were randomly oriented and/or shifted by a large degree compared to second-layer molecules, it would be possible to image them where they protrude from beneath the second layer. We do not observe such a phenomenon; therefore we conclude that molecules in both layers must largely overlap. The issue of the registry between the first and second layers will be explored in greater depth later in this paper.

The structure for this monolayer is given in Fig. 4(c). The matrix notation for this structure is Cu(111)-(3 3, 0 6)-Pn, with Pn molecules oriented along Cu closely packed rows, as for the other structures. The density of this structure is  $\frac{1}{18}$  or  $0.057$  Pn molecules per surface Cu atom, approximately  $\frac{5}{3}$  that of the  $R$  phase and  $\frac{7}{6}$  that of the  $H$  phase. The density of the monolayer structure giving rise to the bilayer is significantly greater than that of the herringbone structure. The molecules in the herringbone structure show negligible

tilt of the molecules about their molecular short axis. When the density increases, the steric interaction of the hydrogen atoms leads to the development of a consistent tilt in the molecules. Tilting behavior due to the steric interaction between molecules has been observed also for Pn/Au(111) (Ref. 27) and Pn/Ag-Si(111)- $(\sqrt{3} \times \sqrt{3})R30^\circ$ ,<sup>26,28</sup> although these systems tilt about the molecular long axis.

When quantized to the Cu NN distance, the smallest interseparation of Pn molecules parallel to their short axes consistently observed across all data is  $\frac{3\sqrt{3}}{2} \text{ Cu}_{\text{NN}} = 0.664 \text{ nm}$  and parallel to their long axes is  $6 \times \text{Cu}_{\text{NN}} = 1.54 \text{ nm}$ . If a model is restricted thus and an additional restriction is applied such that molecules should line up end to end (again, as is consistently observed in our data), the only degree of freedom left is the relative positions of end-to-end chains of Pn molecules. This is also quantized to the Cu NN distance, as the molecular motion data in Fig. 2(c) demonstrate. Within these restrictions, there exist four nonequivalent registries of adjacent Pn chains. These are shown in Fig. 5. Only one of these registries [Figs. 4(c) and 5(b)] is observed in the data [Figs. 4(a) and 4(b)]. By construction of models of small domains of the other three registries, a simple analysis measuring the separations between each hydrogen atom on one molecule and its two nearest neighbors on adjacent molecules was carried out. We find that the average H-H nuclear separations for the four structures in Fig. 5 are (a)  $0.271$ , (b)  $0.289$ , (c)  $0.284$ , and (d)  $0.286 \text{ nm}$ . The maximum separation,  $0.289 \text{ nm}$ , belongs to the structure we observe in data and which is shown in Fig. 4(c). This suggests that the observed structure is adopted in order to maximize the H-H nuclear separation and thus minimize the repulsive steric interactions between molecules.

Such bilayers have previously been observed for Pn adsorption on both on Au(111) (Ref. 12) and Ag(111).<sup>14,15</sup> The Pn multilayer on Au(111) is stabilized via  $\pi$  stacking up to the highest coverages observed [ $\sim 40$  monolayers]. Kang and Zhu assert that there is no rotational correspondence in

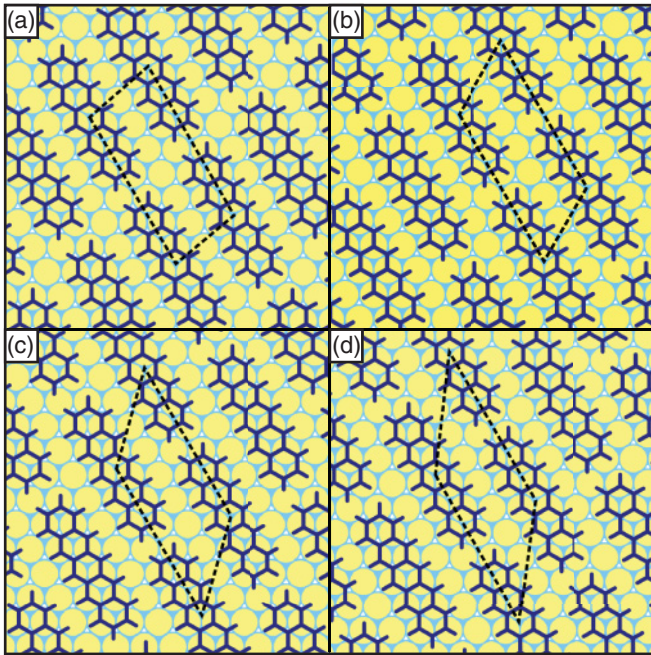


FIG. 5. (Color online) The four nonequivalent registries of Pn end-to-end chains as described in the text. The mean separation of H nuclei on adjacent molecules differs between structures: (a) 0.271, (b) 0.289, (c) 0.284, and (d) 0.286 nm. The maximum separation of 0.289 nm belongs to structure (b), which matches Fig. 4(c) and is the only one of these structures encountered in the data.

the registry of adjacent layers.<sup>12</sup> The concept that the second layer has dissimilar structure to the monolayer is continued across interpretation of data obtained for Pn/Ag(111), in which Eremtchenko *et al.* conclude that the first layer is disordered.<sup>15</sup> However, subsequent studies have somewhat refuted this thesis,<sup>14,16</sup> and the similar data for Pn/Cu(111) provide some additional insight into the formation of the bilayer in general, as outlined below.

In the STM topographs in Figs. 4(a) and 4(b), sections of the Pn bilayer adjacent to monolayer regions are shown. In Fig. 4(a), recumbent (flat) second-layer Pn is observed in the lower part of the image. The upper inset in Fig. 4(a) shows a line profile which highlights a tilt about the molecular short axes for Pn molecules in this layer. The only possibilities for the origin of such a well-ordered effect are (i) the existence of a similar tilt in the molecules beneath; or (ii) the existence of an offset between the unit cells in adjacent layers. Given the subtlety of such a phenomenon and its clear manifestation in the data, either of these possibilities is sufficient to exclude the likelihood of the first layer possessing dissimilar ordering to the second layer. To further illuminate the structural relationship between the first layer and the second layer, line profiles were extracted over material close to bilayer step edges for those domains that had material in both layers visible. These line profiles were taken along a Cu close-packed direction at an angle of  $60^\circ$  to the Pn long axis direction and yielded an offset of  $0.25 \pm 0.05$  nm for the region investigated; this is shown in the lower inset of Fig. 4. This offset was used in the 3D models of the possible bilayer structure depicted in Fig. 6. The significance of an offset in this

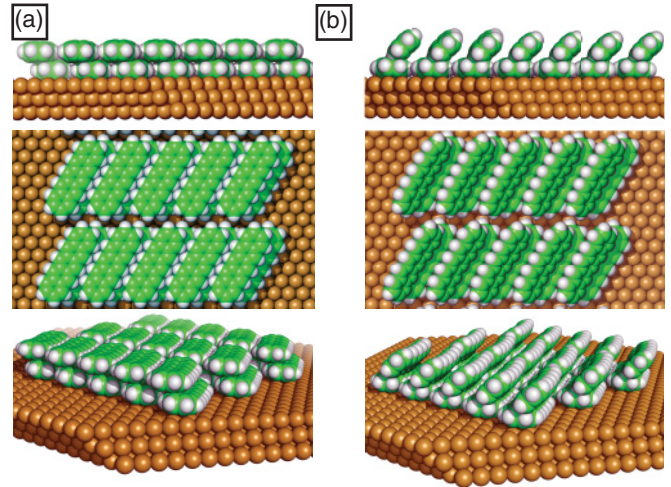


FIG. 6. (Color online) (a) The proposed model for bilayer Pn with a top layer parallel to the first layer; (b) the proposed model for bilayer Pn with a tilted top layer. Both models have as their first layer the structure proposed in Fig. 4.

direction is that it results in an oblique volumetric unit cell and thus breaks twofold symmetry without the necessity of a tilt about the molecular short axes in the underlying molecules. Thus it is not possible to assert whether or not molecules in the underlying layer have a tilt about their short axes.

Domains of second-layer Pn molecules with a tilt about the molecular *long* axes are simultaneously observed in the upper portion of Fig. 4(a) and in Fig. 4(b). The distribution of these two kinds of second-layer Pn is well represented in the figure; large recumbent bilayer domains are observed, while tilted second-layer Pn is restricted to smaller domains. The attribution of such a tilt to particular domains is based on the greater apparent height of such domains as compared to recumbent second-layer Pn and also on the crescent shape of Pn molecules in these domains.

It is difficult to understand why molecules in the second layer maintain a bend about their short axis, as shown in Fig. 4(a). Chemisorption between the first layer and the Cu substrate involves distortion of the molecules, as found in theoretical work on Cu(110).<sup>17</sup> For molecules adsorbed flat on the surface and imaged with a bias voltage either below the highest occupied molecular orbital (HOMO) or above the lowest unoccupied molecular orbital (LUMO), the shape of the orbitals will affect the apparent shape of the molecules in STM. However, the side-on observation of crescent-shaped molecules in tilted second-layer domains [Fig. 4(b)] provides convincing evidence that the molecular bending is a genuine geometric effect. The observation of bending in multiple directions for various molecules in Fig. 4 rules out the possibility that these observations are due to an asymmetric tip effect. Such a bend is not visible for first-layer Pn molecules adsorbed on Ag or Au surfaces. Second-layer molecules on such surfaces appear as two-lobed features,<sup>12,14</sup> although it is not clear whether this is an electronic or geometric effect due to the various tunneling conditions employed.

The activation of a reorganization of molecules with the STM tip at room temperature has been observed previously for Pn atop Ag-Si(111)- $(\sqrt{3} \times \sqrt{3})R30^\circ$ .<sup>26,28</sup> It is not clear



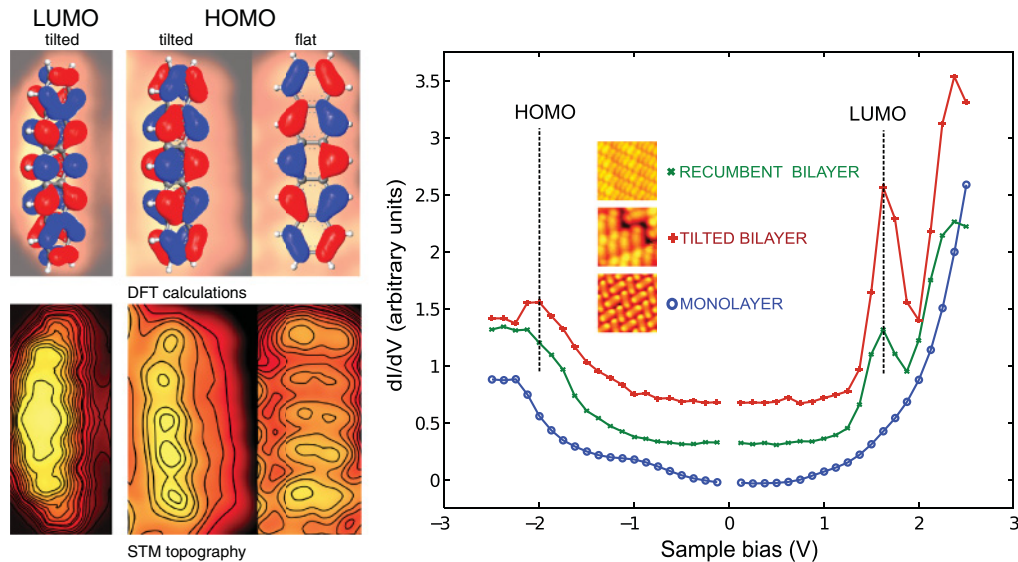


FIG. 7. (Color online) Left: LUMO and HOMO calculations and corresponding STM topographs. There are two HOMO plots as experimental measurements cover Pn molecules in both the recumbent configuration and with a tilt about the molecular long axis. There is one LUMO plot as LUMO data cover only tilted Pn molecules. The HOMO images are of individual second-layer molecules in the data shown in Fig. 4(a). The LUMO image is an average over several second-layer molecules from the data shown in Fig. 4(b) in which scans over each molecule are added together, with each scan contributing an equal amount to the overall image. Right: Scanning tunneling spectroscopy data from tilted and recumbent bilayer and monolayer Pn. The primary orbitals are indicated, showing the lack of contribution to the  $dI/dV$  signal of the orbitals of the monolayer. The STS traces are generated from grid spectroscopy performed over  $128 \times 128$  grids of the surface. Representative topographs are reproduced for reference. The recumbent second-layer trace is an average of around 11 000 curves, the tilted second-layer trace of around 3000 curves, and the monolayer trace of 16 000 curves.

whether a similar phenomenon is responsible for the reorientation of certain molecules in the second layer about their long axes.

Käfer *et al.* reported that the results for Pn bilayers on Au(111) were not self-consistent,<sup>10</sup> given that the earlier result of  $\pi$ -stacked, flat multilayers reported by Kang and Zhu<sup>12</sup> had been obtained after annealing at temperatures “where sublimation of pentacene already takes place.”<sup>10</sup> The annealing temperature reported in the Kang and Zhu paper was 353 K and in the data under discussion ranges from 400 to 420 K. They go on to report the observation of bulk Pn(011) islands observed on Au(111), separated by regions of a flat-lying Pn monolayer. This is used to support a picture of the film in which bulk islands lie on a flat-lying monolayer. In light of the data reported in this paper showing a recumbent (flat) bilayer and similar data obtained for Pn/Ag(111),<sup>14,15</sup> we conclude that a  $\pi$ -stacked bilayer or multilayer is a reasonable result. The additional observation of bilayer material with molecules tilted about their long axes suggests a way that the recumbent structure may relax to the bulk structure.

### B. Scanning tunneling spectroscopy

Although there is great variation in the appearance of the second-layer Pn molecules depending on the sample bias during imaging, the monolayer molecules always appear identical, unless, as observed by Lagoute *et al.*, the tip is modified by the adsorption of a Pn molecule.<sup>19</sup> As shown in Fig. 7, bilayer molecules observed above the LUMO energy are seven lobed whereas those observed below the HOMO

energy are five lobed. This observation is in agreement with the calculated wave function surfaces shown, where the bend is artificially generated using a spline which maintains bond lengths and reproduces the geometry found<sup>17</sup> using DFT in the case for Pn adsorption atop Cu(110) [which also matches within error the geometry observed<sup>19</sup> for single Pn molecules atop Cu(111)].

The  $dI/dV$  signal of the monolayer contains no obvious peaks. It is possible that the diffuse peak located at  $-1$  V is a hybrid state formed via strong interaction between the Pn HOMO and the  $d$  electrons of the substrate. The LUMO peak seems absent altogether for this bias sweep range.

The bilayer, on the other hand, shows extremely clear differential conductance orbital peaks which are located within error precisely at the locations identified by Dougherty *et al.* for a bilayer adsorbed atop Ag(111),<sup>29</sup> and in turn for thick Pn films adsorbed on Au surfaces.<sup>31</sup> This indicates that, while the first-layer molecular orbitals may be strongly affected by the metal  $d$ -band electrons, the second-layer electronic structure is close to that for bulk Pn. Similar behavior is also noticed for Pn/Cu(119).<sup>32</sup> The HOMO-LUMO locations for Pn atop NaCl/Cu(111) are closer to the free-molecule values than to the bulk-Pn values.<sup>30</sup>

In terms of producing good metal-organic contacts suitable for molecular electronics applications, this experiment demonstrates that a Pn monolayer through interaction of its electronic structure with a Cu substrate loses the definition of the HOMO and LUMO states that makes Pn such an attractive candidate for donor action in molecular heterojunctions. However, the first Pn layer sufficiently isolates the second layer such that

it exhibits nearly bulklike electronic structure. Both of these observations are encouraging for further work based on this system as the donor component of a nanoscale heterojunction device.

#### IV. CONCLUSIONS

Although Pn has been the subject of intense scrutiny in recent years, two additional structures are observed for monolayer-regime Pn adsorbed on Cu(111). Neither of these arrangements of Pn molecules has been observed on any substrate to our knowledge.

The development of consistent structural disorder based on molecular tilt about the short axis is also observed, in which increasing density of the layer results in increasing interaction of Pn molecules, ultimately forcing the molecules to twist out of plane about their short axis. Although this higher-density structure is not observed in large monolayer domains, it is the preferred configuration for a bilayer. This bilayer may occur simultaneously with second-layer molecules largely parallel to the substrate and with second-layer molecules twisted out of plane about their long molecular axes, in a structure reminiscent of the (011) plane of a bulk Pn crystal.<sup>6,10</sup>

Finally, there is emerging a picture of bilayer Pn on multiple metallic substrates in which the first layer is essentially metallic through strong interaction with the substrate and the second layer exhibits molecular orbital energies similar to those of bulk phase molecules or molecules adsorbed on an insulating layer.<sup>29,30</sup> This is encouraging for energy level alignment in nanoscale heterojunction systems.

#### ACKNOWLEDGMENTS

The use of the Center for Nanoscale Materials at Argonne National Laboratory was supported by the U.S. Department of Energy, Office of Science, Office of Basic Energy Sciences, under Contract No. DE-AC02-06CH11357 and SISGR Contract No. DE-FG02-09ER16109. The authors would like to acknowledge the technical assistance of B. L. Fisher and useful discussions with S. Darling and correspondence with D. Dougherty. The open-source/freeware software used for analysis and figure editing was GWYDDION (gwyddion.net), PYMOL (www.pymol.org), INKSCAPE (www.inkscape.org), IMAGESXM (www.liv.ac.uk/~sdb/ImageSXM/), ARGUSLAB (www.arguslab.com), and JMOL (jmol.sourceforge.net).

\*jrguest@anl.gov

<sup>1</sup>C. W. Tang, *Appl. Phys. Lett.* **48**, 183 (1986).

<sup>2</sup>Y. Shen, A. R. Hosseini, M. H. Wong, and G. G. Malliaras, *ChemPhysChem* **5**, 16 (2004).

<sup>3</sup>A. Aviram and M. A. Ratner, *Chem. Phys. Lett.* **29**, 277 (1974).

<sup>4</sup>H. Ishii, K. Sugiyama, E. Ito, and K. Seki, *Adv. Mater.* **11**, 605 (1999).

<sup>5</sup>M. Daraktchiev, A. Mühlénen, F. Nüesch, M. Schaer, M. Brinkmann, M. N. Bussac, and L. Zuppiroli, *New J. Phys.* **7**, 133 (2005).

<sup>6</sup>R. B. Campbell, J. M. Robertson, and J. Trotter, *Acta Crystallogr.* **14**, 705 (1961).

<sup>7</sup>I. P. M. Bouchoms, W. A. Schoonveld, J. Vrijmoeth, and T. M. Klapwijk, *Synth. Met.* **104**, 175 (1999).

<sup>8</sup>J. T. Sadowski, T. Nagao, S. Yaginuma, Y. Fujikawa, A. Al-Mahboob, K. Nakajima, T. Sakurai, G. E. Thayer, and R. M. Tromp, *Appl. Phys. Lett.* **86**, 073109 (2005).

<sup>9</sup>P. G. Schroeder, C. B. France, J. B. Park, and B. A. Parkinson, *J. Appl. Phys.* **91**, 3010 (2002).

<sup>10</sup>D. Käfer, L. Ruppel, and G. Witte, *Phys. Rev. B* **75**, 085309 (2007).

<sup>11</sup>C. B. France, P. G. Schroeder, and B. A. Parkinson, *Nano Lett.* **2**, 693 (2002).

<sup>12</sup>J. H. Kang and X. Y. Zhu, *Appl. Phys. Lett.* **82**, 3248 (2003).

<sup>13</sup>W. H. Soe, C. Manzano, A. De Sarkar, N. Chandrasekhar, and C. Joachim, *Phys. Rev. Lett.* **102**, 176102 (2009).

<sup>14</sup>D. B. Dougherty, W. Jin, W. G. Cullen, J. E. Reutt-Robey, and S. W. Robey, *J. Phys. Chem. C* **112**, 20334 (2008).

<sup>15</sup>M. Eremtchenko, R. Temirov, D. Bauer, J. A. Schaefer, and F. S. Tautz, *Phys. Rev. B* **72**, 115430 (2005).

<sup>16</sup>D. Kafer and G. Witte, *Chem. Phys. Lett.* **442**, 376 (2007).

<sup>17</sup>K. Müller, A. Kara, T. K. Kim, R. Bertschinger, A. Scheybal, J. Osterwalder, and T. A. Jung, *Phys. Rev. B* **79**, 245421 (2009).

<sup>18</sup>E. Annese, C. E. Viol, B. Zhou, J. Fujii, I. Vobornik, C. Baldacchini, M. G. Betti, and G. Rossi, *Surf. Sci.* **601**, 4242 (2007).

<sup>19</sup>J. Lagoute, K. Kanisawa, and S. Fölsch, *Phys. Rev. B* **70**, 245415 (2004).

<sup>20</sup>S. Lukas, G. Witte, and C. Wöll, *Phys. Rev. Lett.* **88**, 028301 (2001).

<sup>21</sup>A. Ferretti, C. Baldacchini, A. Calzolari, R. Di Felice, A. Ruini, E. Molinari, and M. G. Betti, *Phys. Rev. Lett.* **99**, 046802 (2007).

<sup>22</sup>Q. Chen, A. J. McDowall, and N. V. Richardson, *Langmuir* **19**, 10164 (2003).

<sup>23</sup>L. Gross, F. Mohn, N. Moll, P. Liljeroth, and G. Meyer, *Science* **325**, 1110 (2009).

<sup>24</sup>K. Toyoda, Y. Nakano, I. Hamada, K. Lee, S. Yanagisawa, and Y. Morikawa, *J. Electron Spectrosc.* **174**, 78 (2009).

<sup>25</sup>L. Gavioli, M. Fanetti, M. Sancrotti, and M. G. Betti, *Phys. Rev. B* **72**, 035458 (2005).

<sup>26</sup>J. Teng, K. Wu, J. Guo, and E. Wang, *Surf. Sci.* **602**, 358 (2008).

<sup>27</sup>T. Suzuki, M. Kurahashi, X. Ju, and Y. Yamauchi, *Appl. Phys. Lett.* **83**, 4342 (2003).

<sup>28</sup>P. Guaino, D. Carty, G. Hughes, P. Moriarty, and A. A. Cafolla, *Appl. Surf. Sci.* **212**, 537 (2003).

<sup>29</sup>D. B. Dougherty, W. Jin, W. G. Cullen, G. Dutton, J. E. Reutt-Robey, and S. W. Robey, *Phys. Rev. B* **77**, 073414 (2008).

<sup>30</sup>J. Repp, G. Meyer, S. M. Stojković, A. Gourdon, and C. Joachim, *Phys. Rev. Lett.* **94**, 026803 (2005).

<sup>31</sup>F. Amy, C. Chan, and A. Kahn, *Org. Electron.* **6**, 85 (2005).

<sup>32</sup>E. Annese, J. Fujii, C. Baldacchini, B. Zhou, C. E. Viol, I. Vobornik, M. G. Betti, and G. Rossi, *Phys. Rev. B* **77**, 205417 (2008).